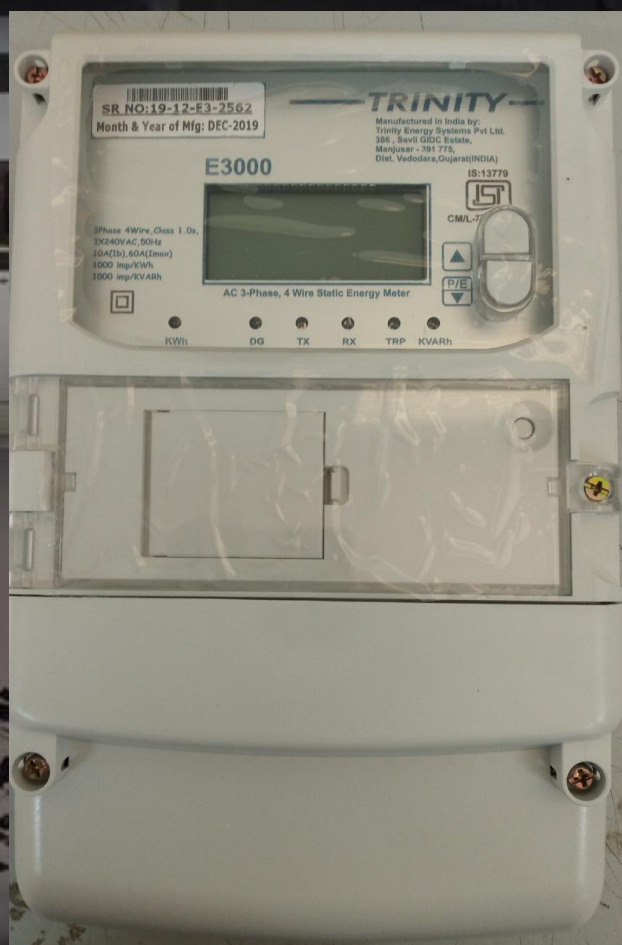


E3000

REVENUE GRADE DUAL SOURCE METER



Accuracy Class 1.0s as per IS13779.

Dual Source Metering (EB & DG) option available.

RS-485 Port for Connecting to SCADA / EMS with MODBUS-RTU protocol (Option).

8-Digit LC Display.

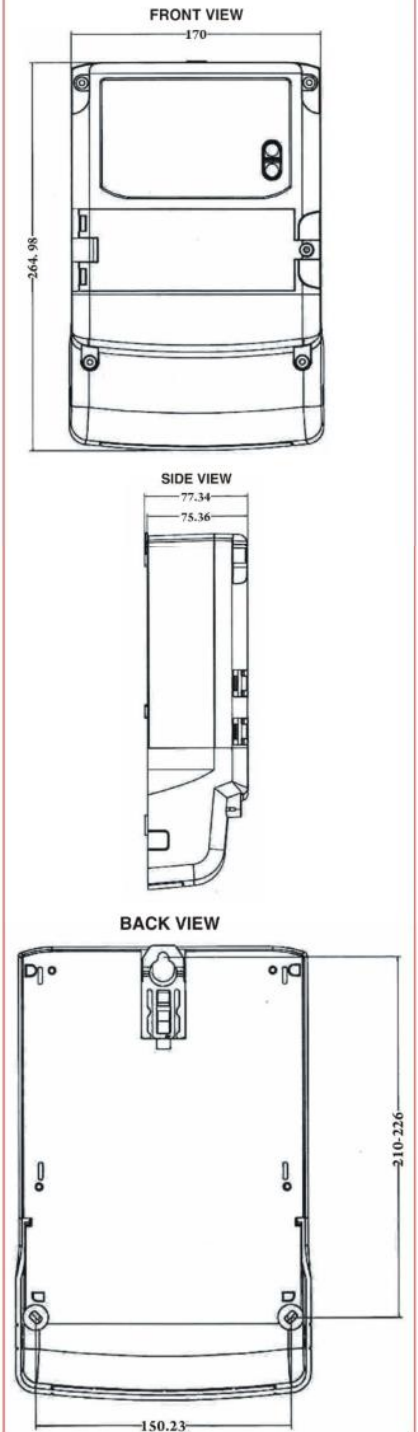
Load Tripping through in-built 80A relays.

- E3000 is a state-of-the-art Digital KWh Meter. The meter meets the accuracy requirements of class 1.0s as per the ISI 13779 and is available in 3P4W version, in current ranges of 5-30A and 10-60A.
- The meter is equipped with RS485 communication port for implementation of EMS/BMS in a PC or SCADA environment.
- It is a dual source meter and has two energy registers.
- E3000 is guaranteed to work in harsh noisy environments, and meets or exceeds the regulatory requirements for EMI/EMC, voltage and frequency disturbances, faults, etc.
- Applications: Shopping Malls & Multiplexes, Residential Townships, Commercial Buildings, LT industrial loads and many more.

Technical Specifications

Type		Name	Parameter	Statistics
INPUT	Supply		Three Phases and Neutral of a 3P4W system	
	Voltage		Direct Voltage Input : 3X240 VAC Burden : 0.5VA	
	Current		Ibasic : 5A or 10A Imax: 30A or 60A.	
	Power Supply		Self power. Unit has in-built 3-phase supply with an operating range of 60 VAC - 480 VAC, 50-60 Hz.	
Output		3 Nos. 80A latching relays. Used for load tripping. Trip limit for EB & EG Trip limit for EB & DG programmable at site.		
MEASUREMENT	True RMS Basic Parameters	Voltage (Volts L-N & L-L)	VL-N - Accuracy : 0.5% of Reading VL-L - Accuracy : 1.0% of Reading	
		Current (Amps IR, IY, IB)	Accuracy : 0.25% of Reading	
		Frequency operating	50 Hz, ±10%	
		Burden	Voltage circuit : < 2 W per phase. Current circuit : < 3 VA per phase	
	Power	Active Power (KW)	Accuracy: 1% of Reading (For IPFI>0.5)	
		Reactive Power (KVA)	Accuracy: 1.5% of Reading (Between 0.5 Lag to 0.8 Lead)	
		Apparent Power (KVAR)	Accuracy: 1% of Reading	
		System Power Factor	Accuracy: 1.0% of Reading (IPFI≥0.5) Range of Reading: 0.05 to 1.00 Lag/Lead	
	Energy	Active Energy (KWh)	Range of Reading: 0 to 9999999.9 Accuracy: 1.0S as per IS13779	
		Apparent Energy (KVARh)	Range of Reading: 0 to 9999999.9 Accuracy: 1.5% of Reading	
Metrology		As per IS13779, Class 1.0 meter		
Data Retention		In ferro-magnetic non-volatile memory, no battery, Data retention 15 years without power.		
MISC.	Display format	Customized alphanumeric LCD		
	Operating temp	0°C to 50°C		
	Weight	1.5 Kgs (Approx.)		
	RS485	MODBUS-RTU protocol		

Dimension Drawing



Trinity Energy Systems (P) Ltd.

386, Savli G.I.D.C. Industrial Estate, Vadodara - 391 775, Gujarat, INDIA

www.trinityenergy.co.in

+91-922 800 4452/53/54

info@trinityenergy.co.in