

MOTOR PROTECTION DEVICE

|MPD-9611



FEATURES

- User Selectable Trip Time.
- Auto/Manual Reset Function.
- True RMS Measurement.

PROTECTION AVAILABLE

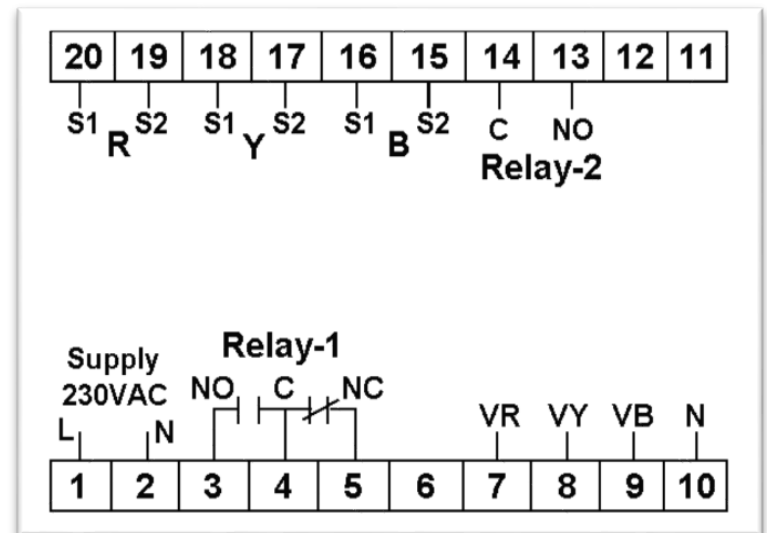
- Over/Under Voltage
- Over/Under Current
- Over/Under Frequency
- Single Phase Prevention
- Short Circuit
- Unbalance
- Phase Loss Lock
- Rotor Point
- Phase Sequence



KEY OPERATION

Operator Mode	
To View Individual Parameters Value	▲ OR ▼
To Enter In Parameter Setting Mode	SET
To Reset The Relay Contact manually after Tripping	RESET
Parameter Setting Mode	
Edited Parameter Value to be Set, And Move to the Next Step	SET
To Increment Parameter Value	▲
To Decrement Parameter Value	▼

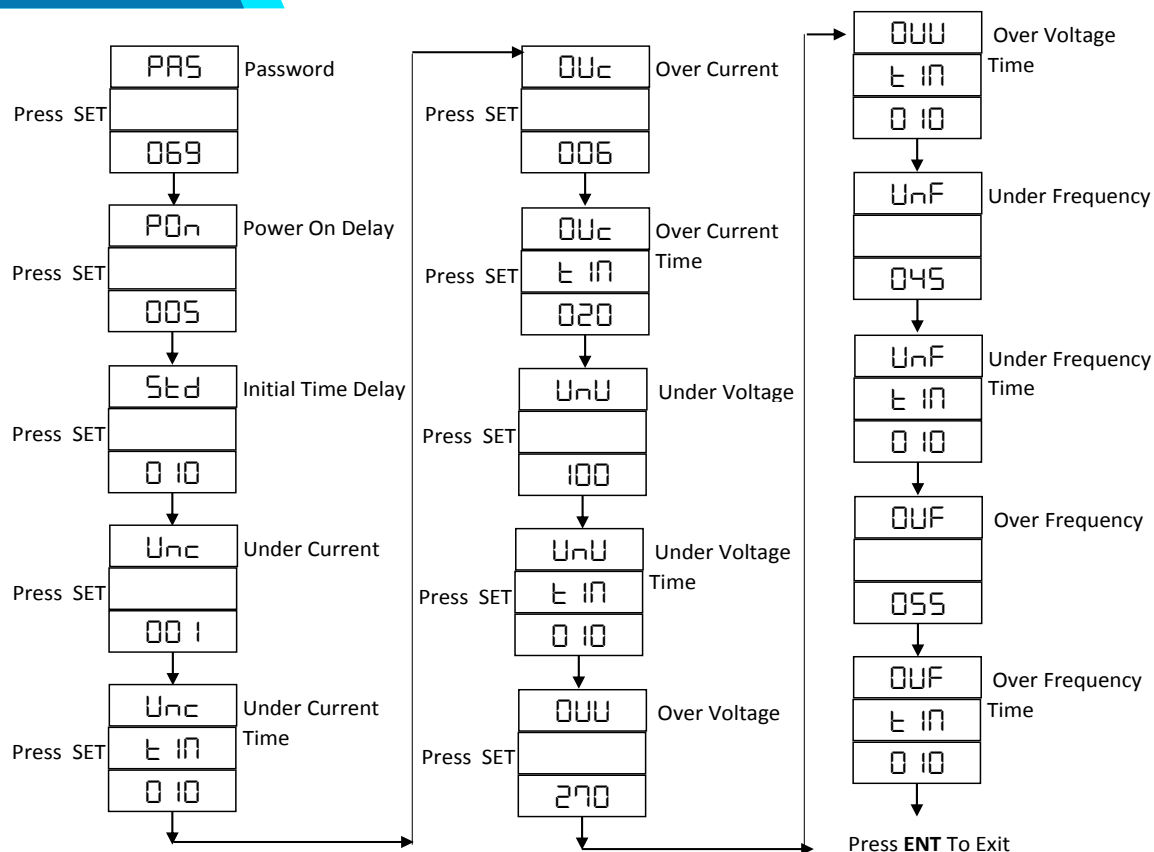
TERMINAL CONNECTION

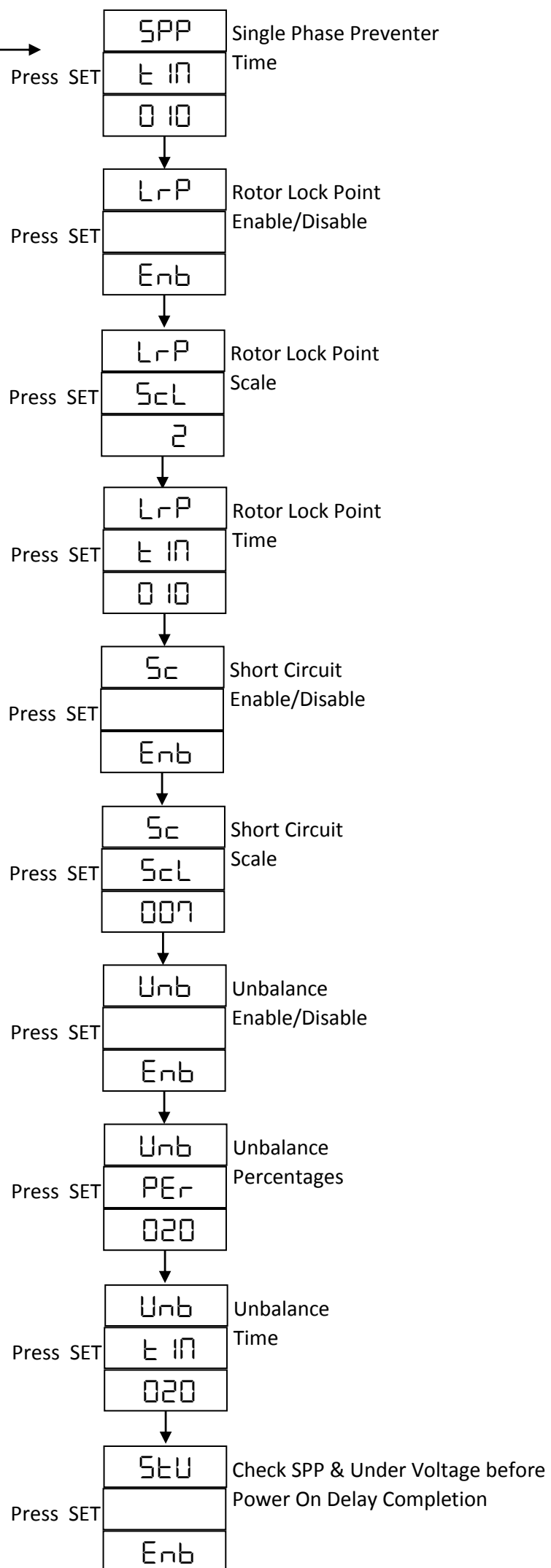
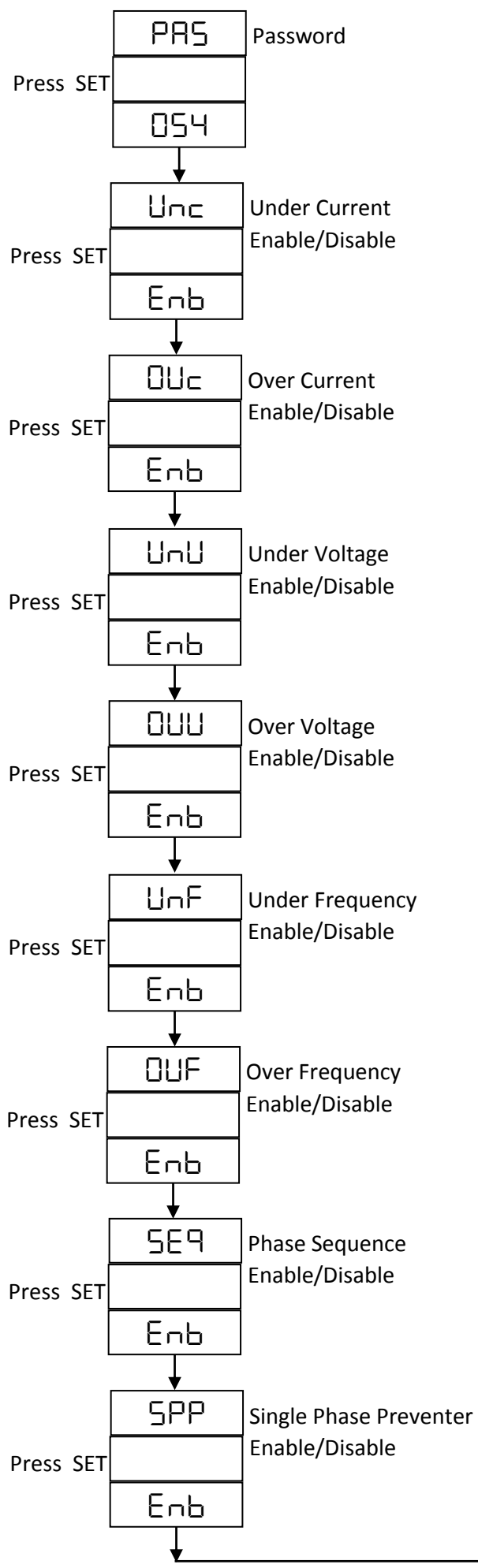


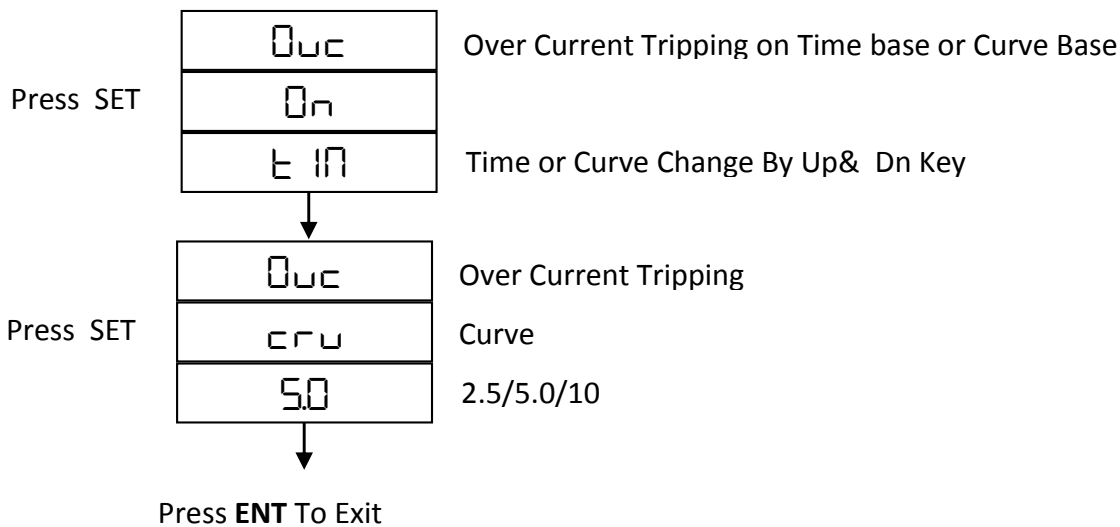
FAULT MESSAGE

Over Current (OUC)	Short Circuit (Sc)
Under Current (UnC)	Single Phase Preventer (SPP)
Over Voltage (OUU)	Rotor Lock (rLP)
Under Voltage (UnU)	Unbalance (Unb)
Over Frequency (OUF)	Phase Sequence (PHA)
Under Frequency (UnF)	(SEQ)

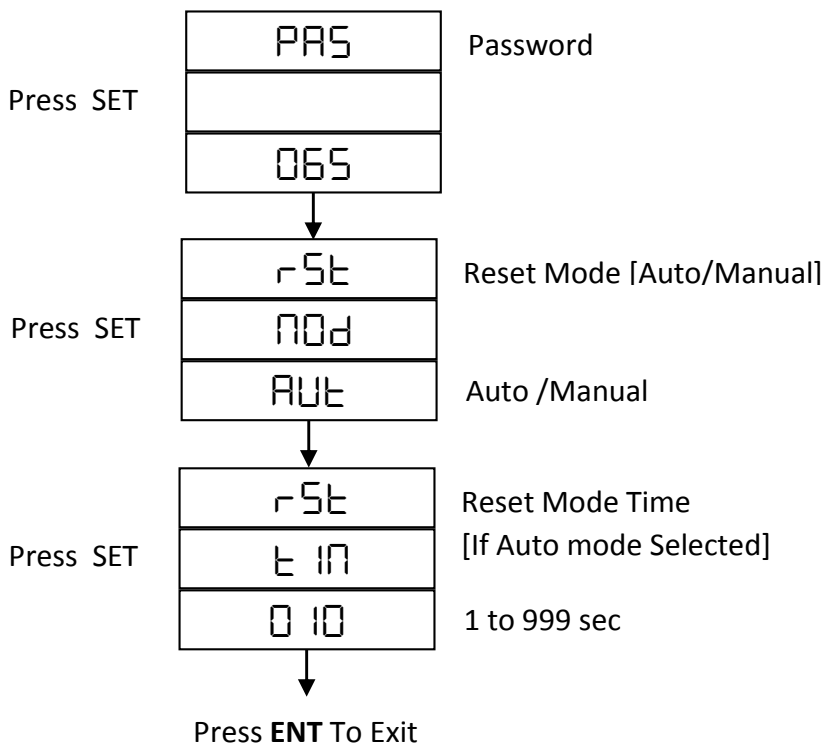
PARAMETER SETTING



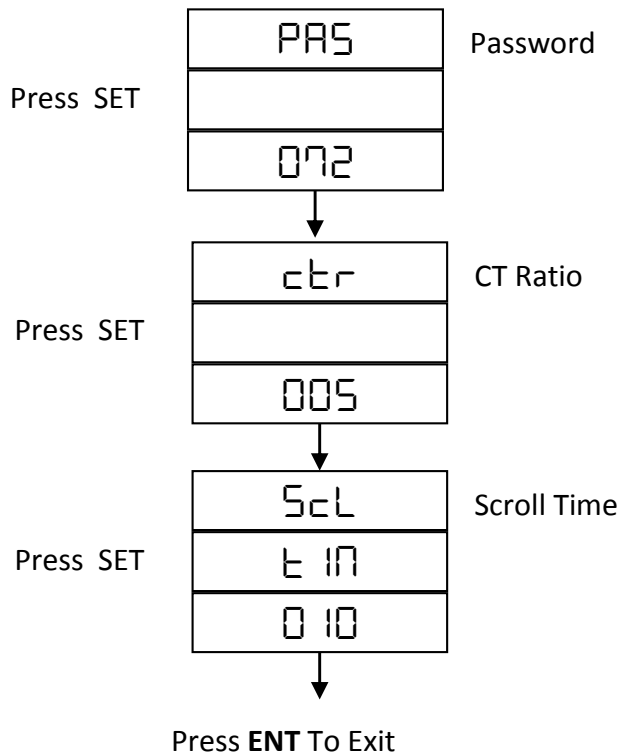




Reset Mode Selection:

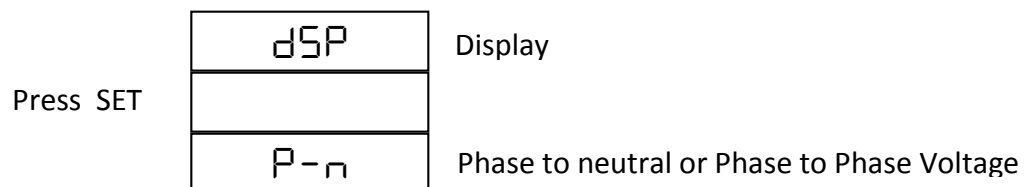


CT Ratio Selection



3Ø Voltage Display (Phase-Neutral or Phase-Phase):

Press Up Key +Power On Instrument



To save changes, power off the unit, and normally power on the instrument

TRINITY ENERGY SYSTEMS PVT LTD

Email: sales@trinityenergy.co.in
Web: www.trinityenergy.co.in

TRINITY



* Specifications are subject to change without notice due to continuous improvement.